

1. Insert Leading Edge of the wing into Leading Edge Connector.

2. Insert the Trailing Edge of wing into Trailing Edge Connector. Repeat steps 1 and 2 for the opposite wing.

3. Insert Cross (2 long) Spreaders through Center Grommet located at the bottom of the fuselage.

4. Insert Top Cross Spreader Ends into Wing Connectors A1 and A2 to form a "U" shape. Also see photos of bottom side of Thunderbolt. Take Bottom Cross Spreader, repeat STEP 4, and insert ends into Wing Connectors B1 and B2 to form an upside down "U".

5. Insert Tail Wing Spreader into Connector.

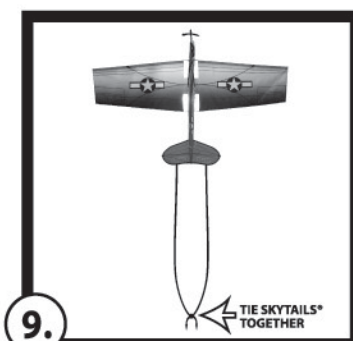
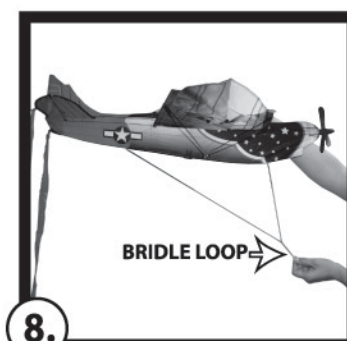
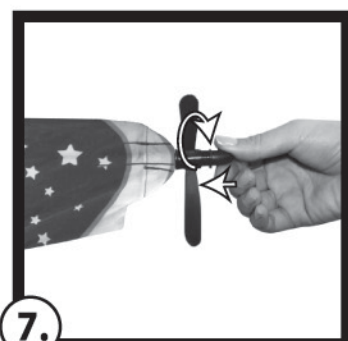
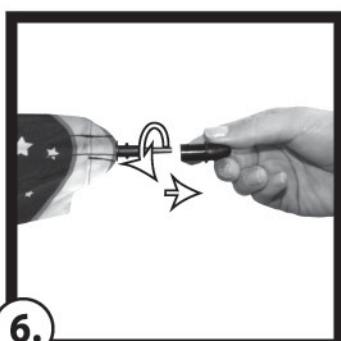
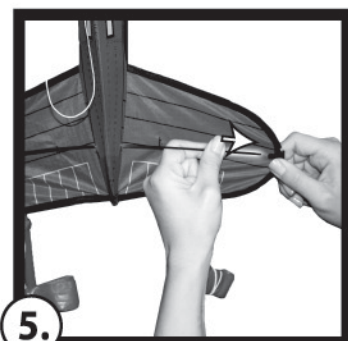
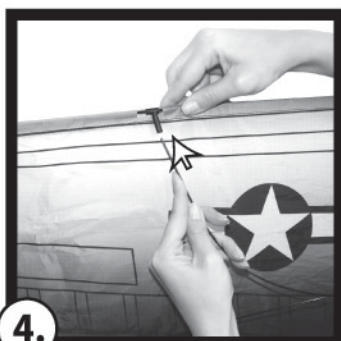
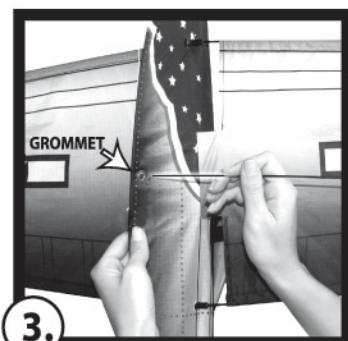
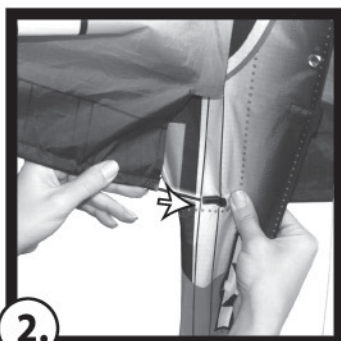
6. Twist to remove the Nose. Twist counter clockwise to remove.

7. Slide Propeller over Nose. Twist and Lock Nose to secure. Twist clockwise to secure.

8. Attach QuikClip® to Bridle Loop. Make sure Bridle hangs free, as per image.

9. In strong winds, tie SkyTails® together for more stability.

**Note: When finished flying your kite, reverse assembly steps, roll up and place back into package for storage. Store in a cool place.*



LAUNCHING - ASSISTED LAUNCH

- The kite requires a minimum wind of 8 mph / 11.3 kph. Let out approximately 75 feet / 22.9 m of line and have an assistant hold the kite.
- With your back to the wind, release the kite and take a few steps backwards, the kite will rise into the air. Tug line to gain altitude, let out line to gain distance.
- For storage, reverse assembly steps and place into package. Store your kite in a cool dry place. Excessive heat and/or sunlight can damage the package and kite.

KITE SAFETY

WARNING! Do not fly near overhead power lines.
WARNING! Do not use near overhead power lines or during thunderstorms.
WARNING! Not suitable for children under 3 years due to small parts.
WARNING! Not suitable for children under 3 years due to long cord.
 Please remove all packaging material before giving the toy to child.
 Keep important information for future reference.

Never fly near an airport.
 Never fly over people.
 Never fly in thunderstorms.
 Never fly near busy streets.
 Never fly near overhead power lines.

Never try to retrieve your kite from power lines.
 Call your local power company for assistance.